

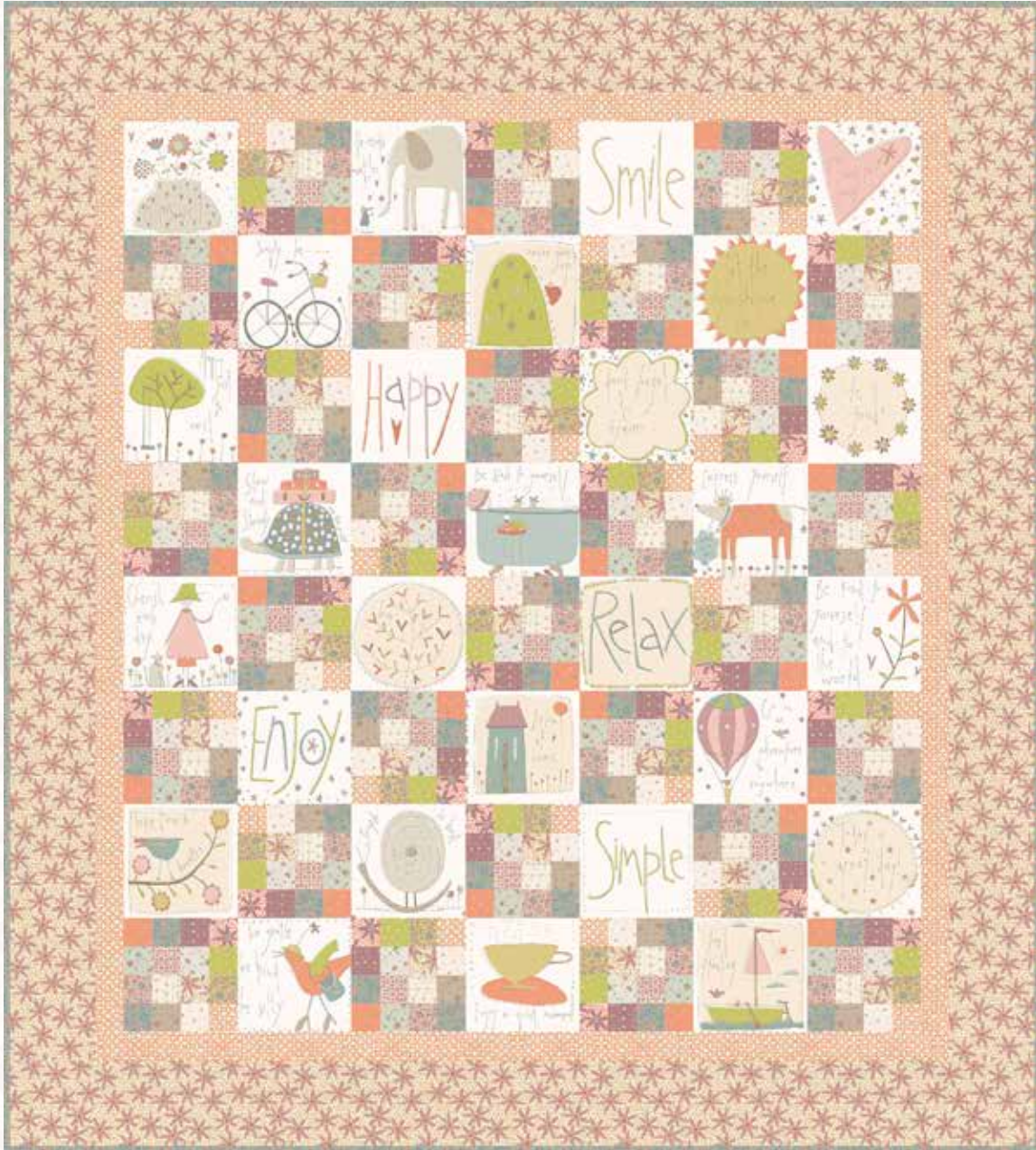
Happy As Can Be




• A Free Project Sheet •
• NOT FOR RESALE •

By Anni Downs

Quilt Design by Anni Downs



Skill Level: Advanced Beginner

 Henry Glass & Co., Inc.



facebook

Finished Quilt Size: 45" x 50"
(114.30 cm x 127.00 cm)

49 West 37th Street, New York, NY 10018

tel: 212-686-5194 fax: 212-532-3525

Toll Free: 800-294-9495

www.henryglassfabrics.net

Please check our website for pattern updates before starting this project.

HAPPY AS CAN BE

Finished Quilt Size: 45" x 50"
(114.30 cm x 127.00 cm)

Fabrics in the Simply Be Collection



Leaf & Berry
Orange – 3320-35



Leaf & Berry
Cream/Lilac – 3320-44



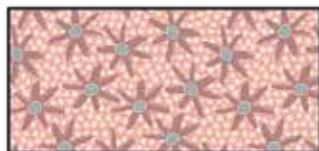
Seedling
Orange – 3321-35



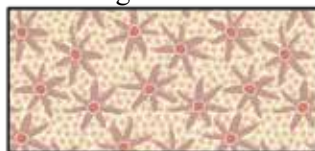
Seedling
Cream – 3321-44



Seedling
Green – 3321-66



Daisy Love
Pink – 3322-22



Daisy Love
Cream – 3322-44



Flower Field
Pink – 3323-22



Flower Field
Green – 3323-66



Flower Field
Blue – 3323-77



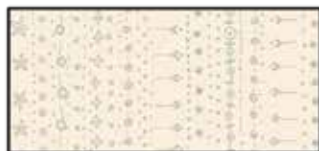
Scattered Flowers
Dove Gray – 3324-17



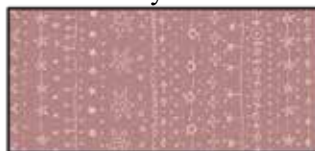
Scattered Flowers
Taupe – 3324-38



Scattered Flowers
Mist – 3324-44



Daisy Chain
Cream – 3325-44



Daisy Chain
Lilac – 3325-55



Main Print
Dove Gray – 3326-17



Main Print
Cream – 3326-44

Materials

¾ yard (0.69m)	Main Print - Cream (A)	3326-44
½ yard (0.46m)	Leaf & Berry - Orange (B)	3320-35
¼ yard (0.23m)	Leaf & Berry - Cream/Lilac (C)	3320-44
¼ yard (0.23m)	Seedling - Orange (D)	3321-35
¼ yard (0.23m)	Seedling - Cream (E)	3321-44
¼ yard (0.23m)	Seedling - Green (F)	3321-66
¼ yard (0.23m)	Daisy Love - Pink (G)	3322-22
1 yard (0.91m)	Daisy Love - Cream (H)	3322-44
¼ yard (0.23m)	Flower Field - Pink (I)	3323-22
¼ yard (0.23m)	Flower Field - Green (J)	3323-66
⅝ yard (0.57m)	Flower Field - Blue (K)	3323-77*
¼ yard (0.23m)	Scattered Flowers - Dove Gray (L)	3324-17
¼ yard (0.23m)	Scattered Flowers - Taupe (M)	3324-38
¼ yard (0.23m)	Scattered Flowers - Mist (N)	3324-44
¼ yard (0.23m)	Daisy Chain - Cream (O)	3325-44
¼ yard (0.23m)	Daisy Chain - Lilac (P)	3325-55
3 yards (2.74m)	Daisy Love - Cream (Backing)	3322-44

*Includes binding

Cutting Instructions

Please note: All strips are cut across the width of fabric (WOF) from selvage to selvage edge unless otherwise noted.

From the Main Print - Cream (A):

- Fussy cut (28) 5 ½” squares, centered on blocks.

From the Leaf & Berry - Orange (B), cut:

- (2) 1 ¾” x 40 ½” WOF strips.
- (2) 1 ¾” x 38” WOF strips.
- (2) 1 ¾” x WOF strips. Sub-cut (28) 1 ¾” squares.

From the Leaf & Berry - Cream/Lilac (C), cut:

- (2) 1 ¾” x WOF strips. Sub-cut (28) 1 ¾” squares.

From the Seedling - Orange (D), cut:

- (2) 1 ¾” x WOF strips. Sub-cut (28) 1 ¾” squares.

From the Seedling - Cream (E), cut:

- (2) 1 ¾” x WOF strips. Sub-cut (28) 1 ¾” squares.

From the Seedling - Green (F), cut:

- (2) 1 ¾” x WOF strips. Sub-cut (28) 1 ¾” squares

From the Daisy Love - Pink (G), cut:

- (2) 1 ¾” x WOF strips. Sub-cut (28) 1 ¾” squares.

From the Daisy Love - Cream (H), cut:

- (3) 4 ¼” x WOF strips. Sew the strips together end to end with diagonal seams and cut (2) 4 ¼” x 43” strips.
- (3) 4 ¼” x WOF strips. Sew the strips together end to end with diagonal seams and cut (2) 4 ¼” x 45 ½” strips.
- (2) 1 ¾” x WOF strips. Sub-cut (28) 1 ¾” squares.

From the Flower Field - Pink (I), cut:

- (2) 1 ¾” x WOF strips. Sub-cut (28) 1 ¾” squares.

From the Flower Field - Green (J), cut:

- (2) 1 ¾” x WOF strips. Sub-cut (28) 1 ¾” squares.

From the Flower Field - Blue (K), cut:

- (3) 1 ¾” x WOF strips. Sub-cut (56) 1 ¾” squares.
- (5) 2 ½” x WOF strips for the binding.

From the Scattered Flowers - Dove Gray (L), cut:

- (2) 1 ¾” x WOF strips. Sub-cut (28) 1 ¾” squares.

From the Scattered Flowers - Taupe (M), cut:

- (2) 1 ¾” x WOF strips. Sub-cut (28) 1 ¾” squares.

From the Scattered Flowers - Mist (N), cut:

- (2) 1 ¾” x WOF strips. Sub-cut (28) 1 ¾” squares.

From the Daisy Chain - Cream (O), cut:

- (2) 1 ¾” x WOF strips. Sub-cut (28) 1 ¾” squares.

From the Daisy Chain - Lilac (P), cut:

- (2) 1 ¾” x WOF strips. Sub-cut (28) 1 ¾” squares.

From the Daisy Love - Cream (Backing), cut:

- (2) 53” x WOF strips for the backing. Sew the strips together and trim to make the 53” x 58” back.

Block Assembly

Note: The arrows in figures represent the fabric print direction. Pay attention to the fabric and unit orientations when assembling the various components. Use a ¼” seam allowance with right sides together (RST) unless otherwise noted.

1. Sew together (1) 1 ¾” Fabric B square, (1) 1 ¾” Fabric E square, (1) 1 ¾” Fabric M square and (1) 1 ¾” Fabric K square, in that order from left to right, to make Row One (Fig. 1).

2. Repeat Step 1 and refer to Figure 1 for fabric identification and placement to make Row Two, Row Three and Row Four.

3. Sew together the (4) pieced rows, lengthwise and in numerical order from the top to the bottom, to make (1) 5 ½” Block One square (Fig. 1).

4. Repeat Steps 1-3 to make (28) Block One squares total.

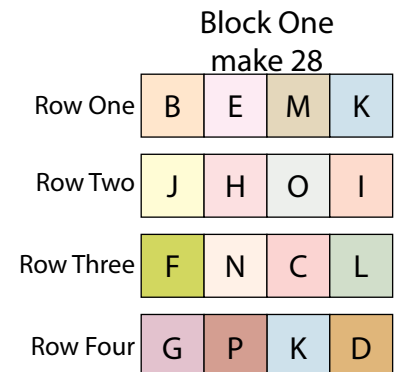


Fig. 1

- Sew together (4) 5 1/2" Fabric A squares and (3) Block One squares, alternating them from left to right, to make Row One (Fig. 2).
- Repeat Step 5 and refer to Figure 2 for component identification, placement and orientation to make Row Two through Row Eight.
- Sew together the (8) pieced Rows, lengthwise and in numerical order from the top to the bottom, to make the 35 1/2" x 40 1/2" Center Block (Fig. 2).

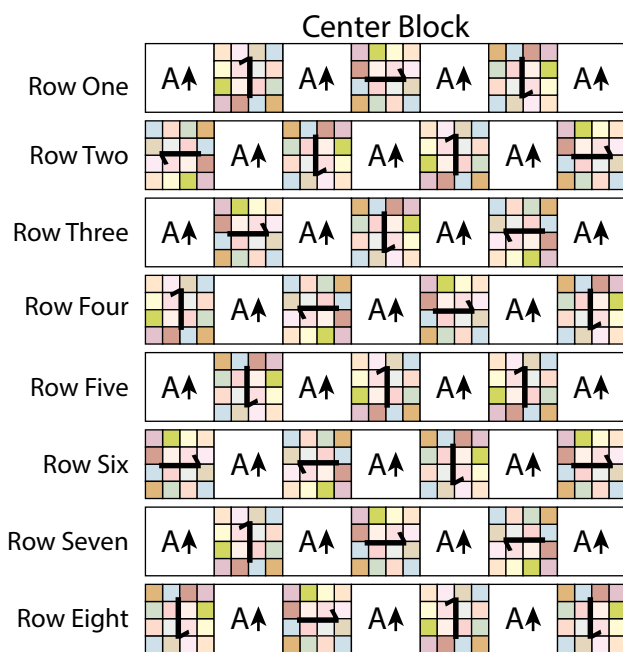
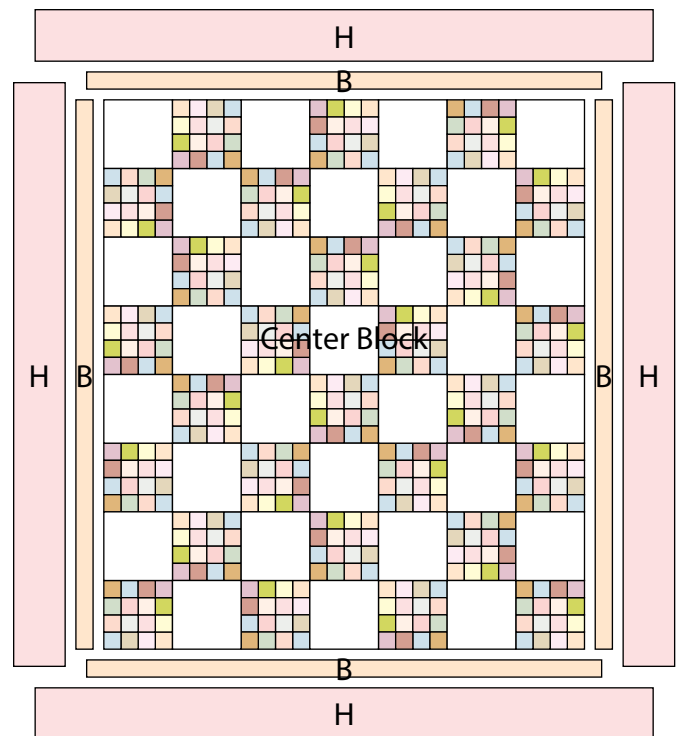


Fig. 2

Quilt Top Assembly

(Follow the Quilt Layout while assembling the quilt top.)

- Sew (1) 1 3/4" x 40 1/2" Fabric B strip to each side of the Center Block. Sew (1) 1 3/4" x 38" Fabric B strip to the top and to the bottom of the Center Block.
- Sew (1) 4 1/4" x 43" Fabric H strip to each side of the Center Block. Sew (1) 4 1/4" x 45 1/2" Fabric H strip to the top and to the bottom of the Center Block to make the quilt top.
- Layer and quilt as desired.
- Sew the (5) 2 1/2" x WOF Fabric K strips together, end to end with 45-degree seams, to make the binding. Fold this long strip in half lengthwise with wrong sides together and press.
- Bind as desired.



Quilt Layout

Every effort has been made to ensure that all projects are error free. All the information is presented in good faith, however no warranty can be given nor results guaranteed as we have no control over the execution of instructions. Therefore, we assume no responsibility for the use of this information or damages that may occur as a result. When errors are brought to our attention, we make every effort to correct and post a revision as soon as possible. Please make sure to check www.henryglassfabrics.net for pattern updates prior to starting the project. We also recommend that you test the project prior to cutting for kits. Finally, all free projects are intended to remain free to you and are not for resale.